

***Test Name: serialNumberLearning***

**Purpose of This Test:**

This test is designed to strengthen the patients cognitive skills of:

- Alternating Attention
- Response Inhibition
- General Attention
- Visual Scanning
- Visual Processing Speed
- Memory Improvement

The test displays a varying number of numbers on the right side, left side, or across the screen, depending upon the Random option that was selected for the test.

The patient is given a set amount of time to study the numbers and then they are removed from the screen.

The patient is to enter the number(s) they just studied. There may be a distracter in the form of sound or an image that is discretely displayed on the screen at the same time the patient is focusing on studying the numbers displayed on the screen. The patient needs to remember the numbers and their order as displayed on the screen.

The test material is divided into various levels.

Complex Level	Number of Numbers Possible
---------------	-------------------------------

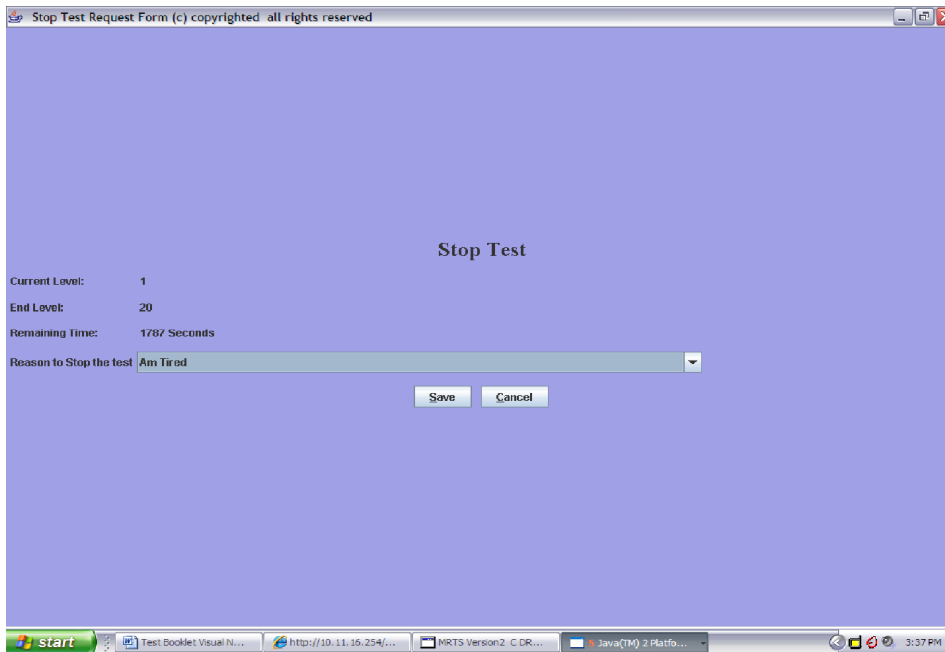
1	1
2	2
3	3
4	4
5	5
6	6
7	7
8	8
9	9
10	10
11	11
12	12
13	13
14	14
15	15
16	16
17	17
18	18
19	19

- This test supports Normal test mode, Streak test mode, and Re-Queue test mode.
  - 1- Normal test mode – This test mode means the patient is progressing thorough each complex level without excessive wrong responses.
  - 2- Streak test mode – This test mode means the patient has progressed through at least given complex level and is having problems getting through the next higher complex level. The test will move the patient to the previous complex level and while in this level if the patient is responding with a calculated number of wrong or mistake responses, the test will automatically show four consecutive right answers. If the patient successfully responds correctly to these screens then the test returns to the Normal test mode.
  - 3- Re-queue test mode – If the patient, while in the streak mode makes an incorrect choice, the test will move the patient automatically into this test mode which will move the patient to next lower level, and provide only correct answers for each for this complex level, and then will do the same for the next higher complex level.

The intent of the distracter is train the patient to ignore sounds and images around them as they use their attention/visual scanning skills to complete the test.

The number of distracters presented at any given difficulty level on any given screen during the test is managed by the doctor. The doctor can set a maximum of two distracters, one an image and one repeating sound, to be presented on the screen for any difficulty level for the test. The distracters can become more intense as the difficulty level of the test increases.

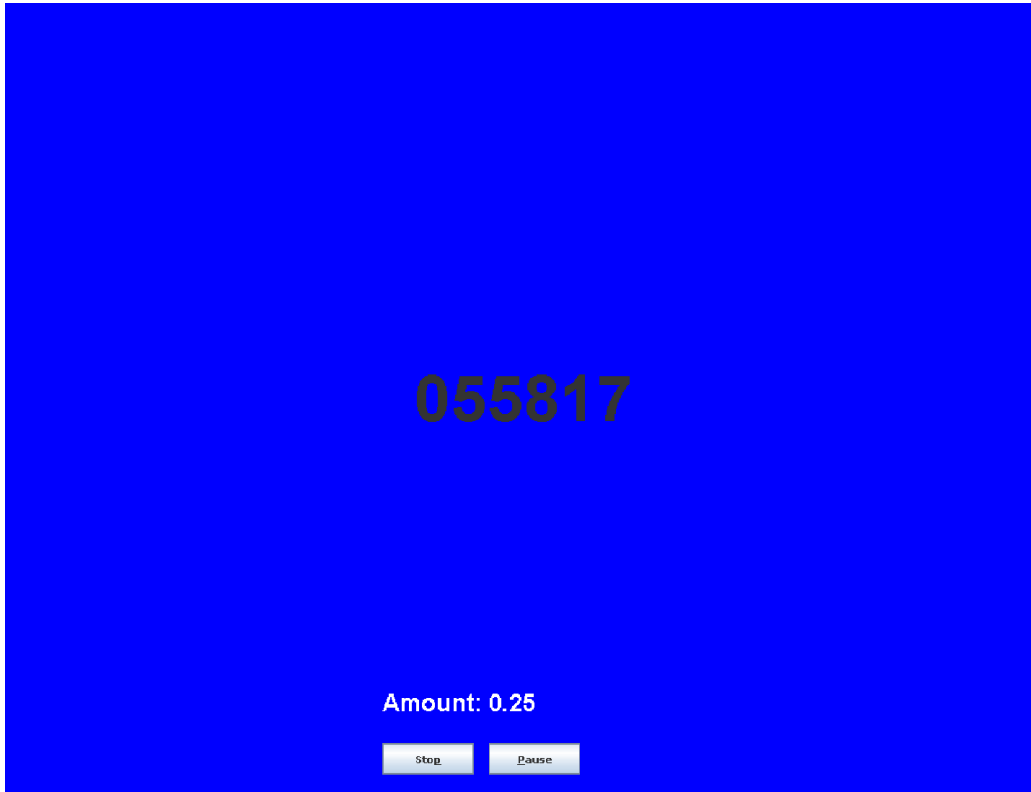
bottom of the screen and a drop down of reasons will be offered. Once the reason is selected and the Save button is pressed, the test status is recorded and the test is stopped.



When the patient takes the test again the test will start on the same difficulty level the test was on when it was stopped but on the first frame for the difficulty level.

All of the instances of stopping and starting the test are appropriately recorded and reports may be obtained regarding these events.

This test it started in complex level 6 and Random option was selected as Both as the numbers are in the middle of the screen.

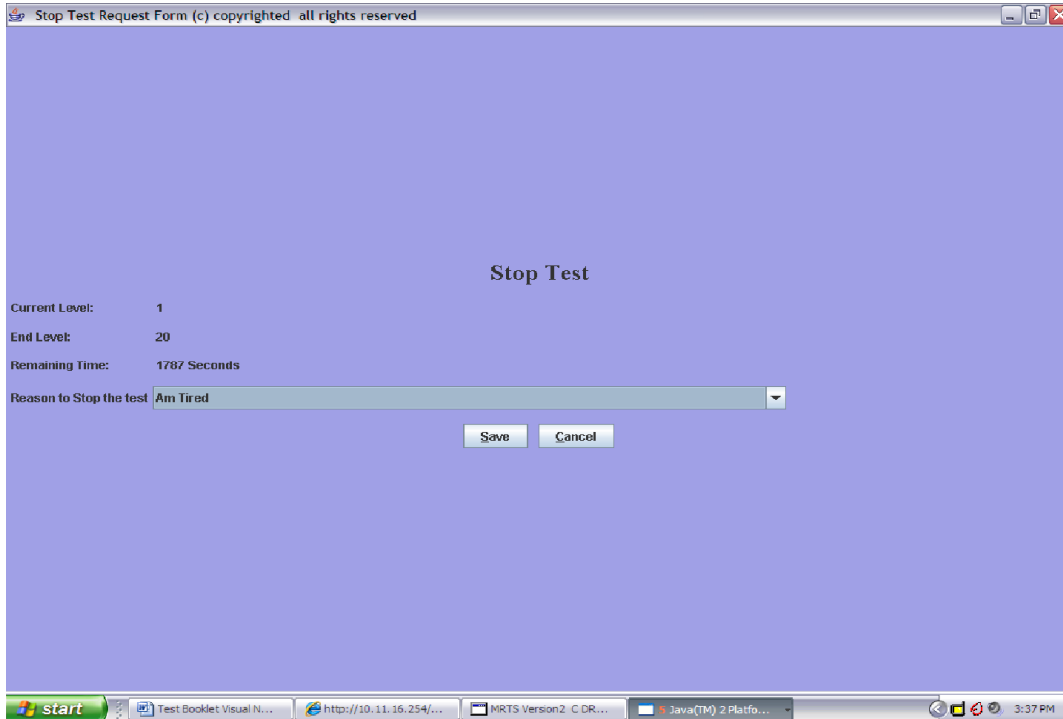


If the patient wishes to stop the test they may do so at any time.

When the Stop button is pressed the following menu is displayed.

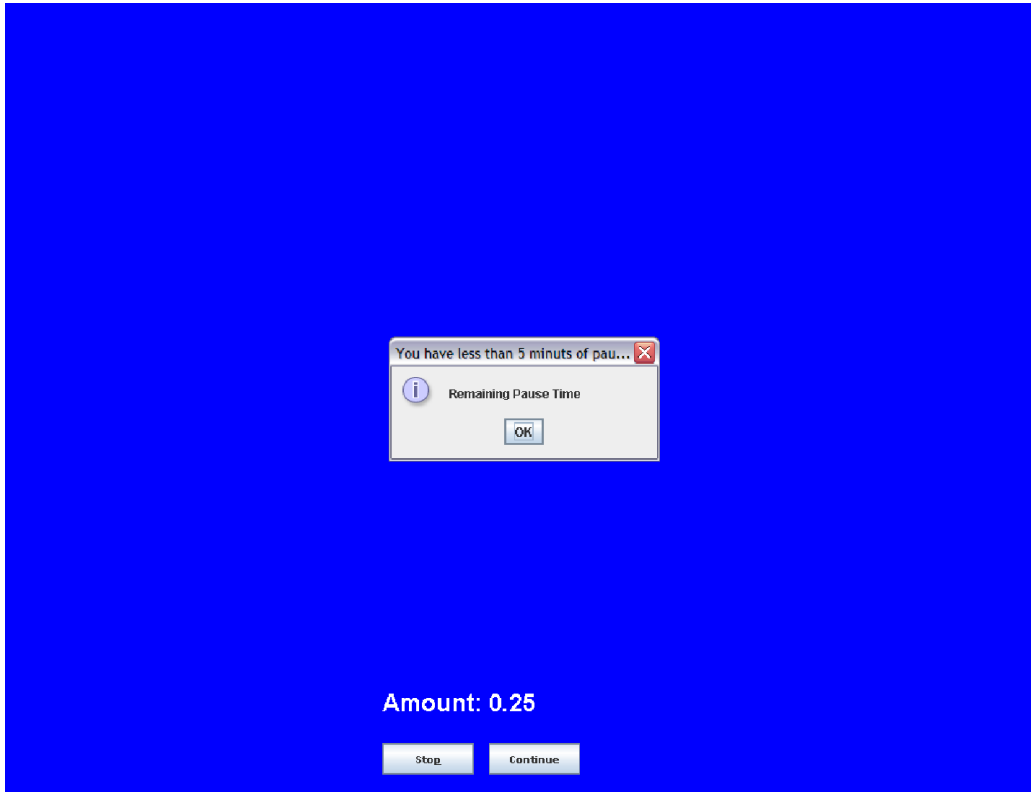
Use the drop down to select the reason for stopping the test.

The test may be restarted from the REHAB TRAINING menu at any time. The test will start on frame 1 for the difficulty level in which the test was stopped.



Select the reason from the drop down. Once the reason has been selected press the Save button to and the reason will be saved into the appropriate files.

If the patient wishes to Pause the test for any reason they should press the Pause button.



When the Pause button is pressed the button will toggle to continue and wait a maximum of 15 minutes. After 15 minutes a pop up menu will be displayed informing the patient and others that in 5 minutes the test will be stopped. If after 5 minutes the test is still in the Pause state the test will be stopped with the reason for stopping set as “Pause limit expired”.

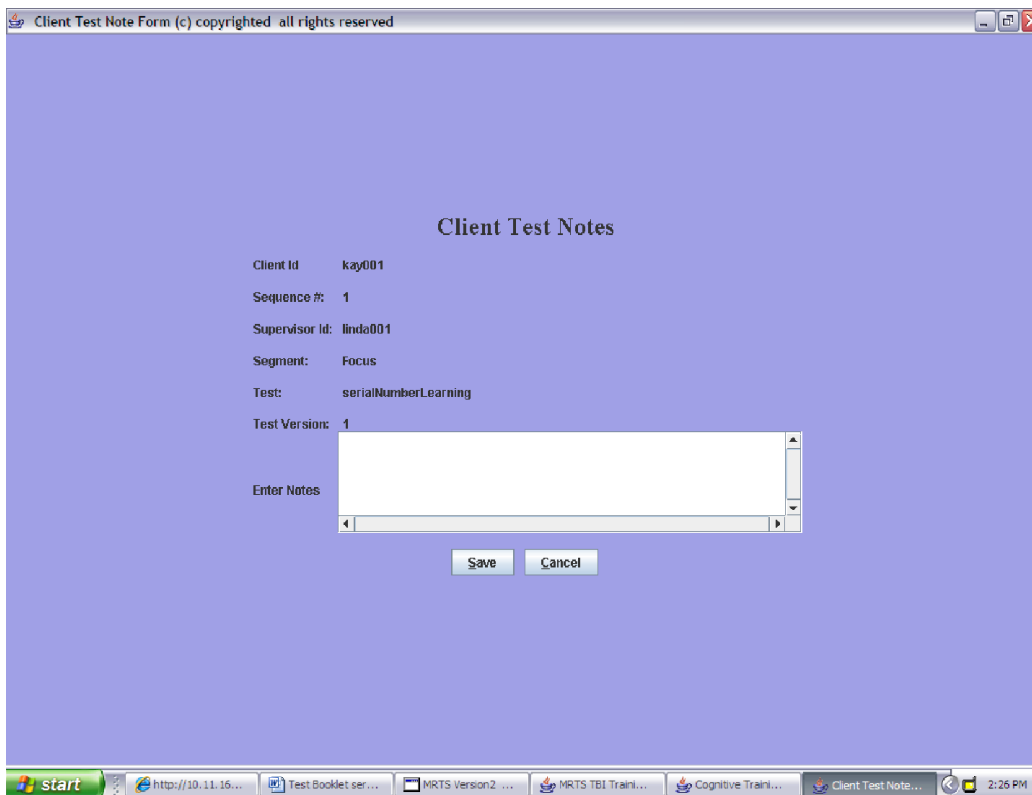
If the test is stopped due to excessive pause time, the test may be restarted at any time from the Train icon. The test will start in frame 1 for of the difficulty level in which the test was at the time it was stopped due to the Pause condition.

When you press the Continue button it will toggle to Pause and the test will continue.

When the patient has completed a test the following screen is

displayed to allow the patient to send the doctor a note:

Once the note is typed pressing the Save button will store the note in the Patient Test Note table.



The screenshot shows a Windows application window titled "Client Test Note Form (c) copyrighted all rights reserved". The window has a purple background and contains the following text and controls:

- Client Test Notes** (Section Header)
- Client Id: kay001
- Sequence #: 1
- Supervisor Id: linda001
- Segment: Focus
- Test: serialNumberLearning
- Test Version: 1
- Enter Notes: A large white text area with a vertical scrollbar on the right and a horizontal scrollbar at the bottom.
- Buttons: "Save" and "Cancel" buttons are located below the text area.

The Windows taskbar at the bottom shows the Start button, a network icon, and several open applications: "http://10.11.16...", "Test Booklet ser...", "MRTS Version2 ...", "MRTS TBI Train...", "Cognitive Train...", and "Client Test Note...". The system clock shows "2:25 PM".